

SteelCloud®

ConfigOS® MPO 2025.1



DATA SHEET

FORGE

The ConfigOS policy workbench that allows custom baseline creation from DISA and CIS-derived content where you choose controls and how to apply them while documenting deviations. These complete baselines integrate with Commander and Shield for implementation and sustainment.

COMMANDER

The server-based application that manages system hardening operations for baseline management, scheduling for scans and remediations, and consolidating enterprise reporting for SIEM and ITSM. Customers can deploy Commander on premise or on a cloud environment.

WINDOWS CLIENT

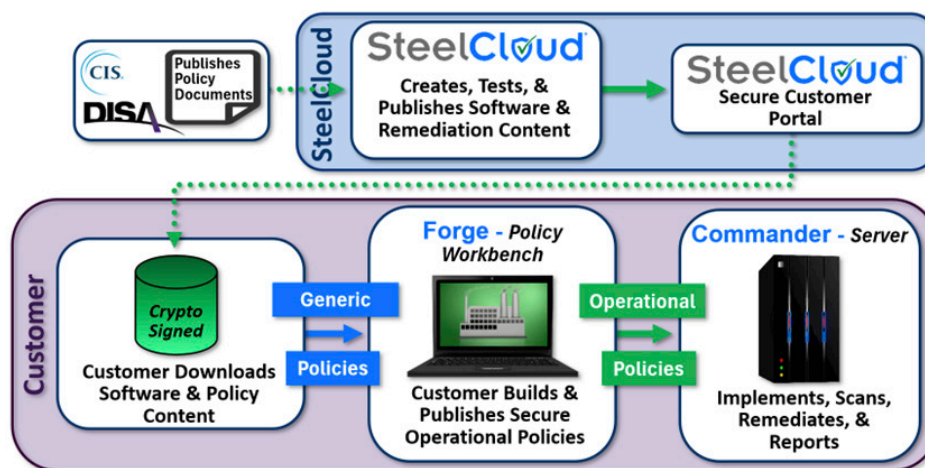
The multi-user GUI to Commander for orchestrating content, creating groups, documenting deviations, setting up schedules, and capturing reporting for scanning and remediations through Shield agents across the enterprise.

SHIELD

The lightweight, highly scalable Windows and Linux agents managed by Commander to do all the heavy lifting for constant compliance monitoring, thereby ensuring reliable adherence for both small and large, complex network enterprises.

ConfigOS MPO WORKFLOW

Users can securely bring frequently updated SteelCloud STIG/CIS Benchmarks content into their environments. Users can also control additional content customizations. Information does not leave the customer's environment.



Key BENEFITS

- ✓ Concurrent multi-user access to optimize operations.
- ✓ Seamless integration with MPO's internal database or external SQL Server/Azure SQL databases.
- ✓ Securely importing policy collections from its Forge.
- ✓ Automatic endpoint self-registration by Shield agents.
- ✓ Automated distribution of updated policies and compliance schedules to Shield agents.
- ✓ Continuous remediation, monitoring, and reporting, managed by simple-to-implement Commander scheduling capabilities.
- ✓ Manual scanning, remediation, and rollback using STIG/CIS policies.
- ✓ Comprehensive logging and reporting of all scan/ remediation and rollback activities and system logging.



Key COMMANDER Capabilities

- ✓ **Dashboard**
Provides real-time visibility into key compliance operation metrics.
- ✓ **Shield Updates through Commander**
Support for automated deployment of Shield updates.
- ✓ **Rapid Policy Debugger™**
Expedites policy creation for dev/test and production. Leverages MPO for remediation. Integrates with Forge for waivers. Generates compliance as code in 30 minutes.
- ✓ **Automated Endpoint Grouping**
Automates endpoint ingestion, selection, and deployment while enabling policies and schedules at scale without human intervention.
- ✓ **Results Templates**
Document and integrate waivers and manual controls with automated controls in the database for seamless compliance management. Attaching to an endpoint group applies manual and machine controls during scans and remediations, achieving comprehensive control coverage.
- ✓ **AutoSelect™**
Automatically selects policies to run using predefined SteelCloud pre-check logic for each supported STIG/CIS Benchmarks control. Allows for easy customizations to address unique, user-specified situations. Greatly simplifies the creation and publication of operational policies.
- ✓ **ScheduleMX™: Set it and forget it!**
Highly flexible scheduler that incorporates user-defined triggers to automate scan, remediation, and updating processes according to user requirements.
- ✓ **GPO Conflict Identification**
Identifies every control in every system where AD/GPO takes the system out of compliance.
- ✓ **Output Formats**
Generates integrated outputs combining manual and machine controls in checklist (CKL/CKLB), JSON, and ASR/ARF formats.

Commander **SYSTEM** Requirements

- ✓ Windows Server **2019, 2022**
- ✓ Full system backup capability
- ✓ Static IP address or hostname
- ✓ **500 MB** for Commander installation

For up to 2,000 endpoints connected to a single Commander

- ✓ Minimum **16 GB** RAM
- ✓ Minimum **8** physical cores or virtual equivalent

For 2,000-20,000 endpoints connected to a single Commander

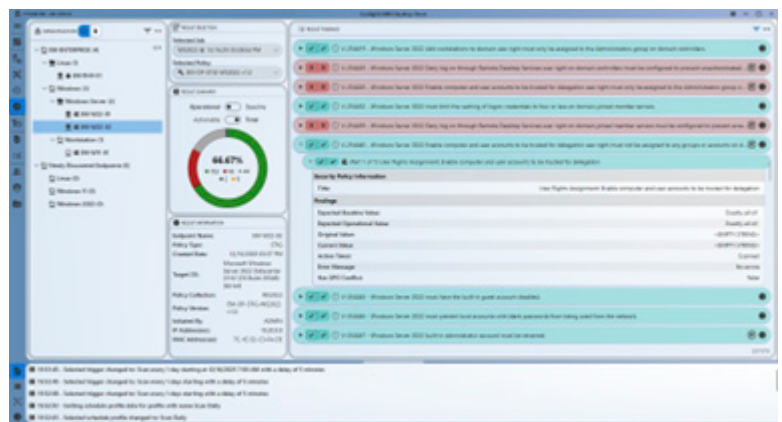
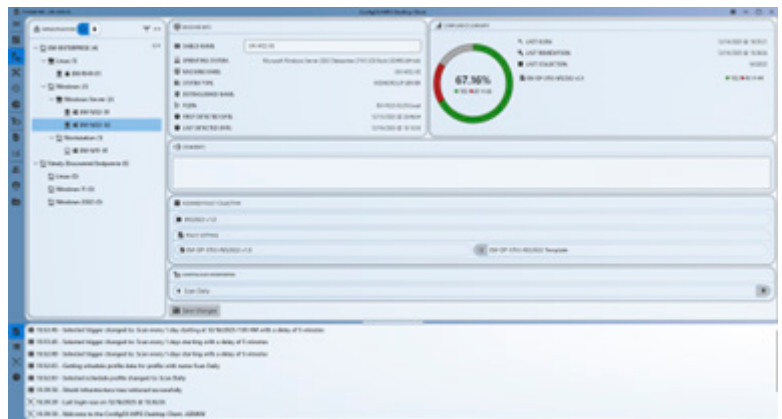
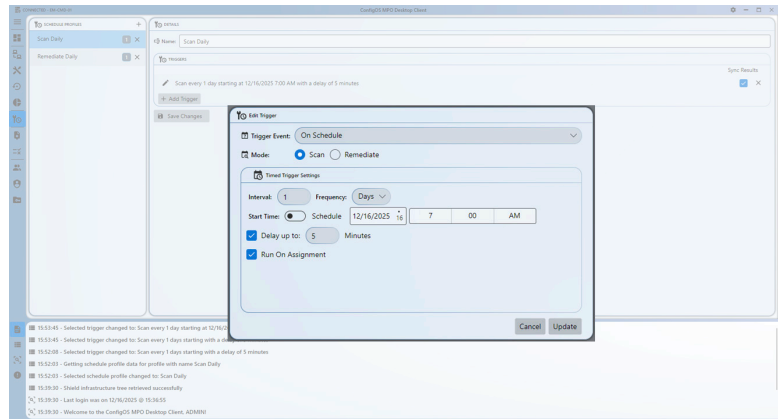
- ✓ **64-128 GB** RAM
- ✓ **16-32** physical cores or virtual equivalent

Database Requirements

- ✓ **For an environment with more than 500 endpoints:** Use an external database such as SQL Server or Azure SQL.
- ✓ **For SQL Server:** Set up a signed certificate for encryption and install it on the Commander server.

Typical scan/remediation report sizes based on the following policies:

- ✓ Windows Server 2019: **700 KB**
- ✓ Windows 11 with the following apps: **2 MB**
 - Adobe Reader
 - Microsoft Defender
 - Microsoft Excel
 - Google Chrome
 - Microsoft Edge
 - Microsoft Word



Key SHIELD Capabilities

- ✓ **Silent Installation**
Enables users to deploy software using standard installation tools.
- ✓ **Auto-Registration/Categorization**
Agent auto-registers itself to Commander and categorizes itself into a group based on a user-defined path. The agent is assigned a policy and schedule from that group.
- ✓ **Rapid Policy Debugger™**
Expedites policy creation for dev/test and production. Leverages MPO for remediation. Integrates with Forge for waivers. Generates compliance as code in 30 minutes.
- ✓ **Beacon Capability**
Continuously registers itself when connected to or disconnected from the network.
- ✓ **Policy Synchronization**
Automatically synchronizes the latest policies from the Commander, thereby ensuring Shield agents always have the latest policies.
- ✓ **Automated Schedule Updates**
Automatically synchronizes the latest schedule from the Commander, thereby ensuring Shield agents always have the latest schedules.
- ✓ **Continuous Compliance Automation**
ScheduleMX ensures compliance and hardens online and offline endpoints through automated schedules.
- ✓ **Reporting**
Reports online and offline compliance results automatically.

Shield SYSTEM Requirements

Memory

- ✓ Minimum **8 GB** RAM

Storage

- ✓ **350 MB** for Shield installation
- ✓ If an operational endpoint is off the network, Shield saves the compliance results in a local database, which increases disk space usage.

Operating System

One of the following:

- ✓ Windows **10** or **11**
- ✓ Windows Server **2016, 2019, 2022, 2025**
- ✓ Red Hat Enterprise Linux **8** or **9**
- ✓ Ubuntu **22**

For more details, visit us at
steelcloud.com
or contact our Sales Team.

